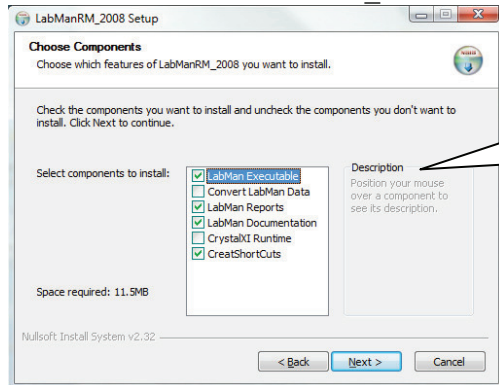


Installation: LabManRM

Purpose: This application provides a method for maintaining ExactRM Labor Tracking entries and creating automatic breaks.

Install: Run InstallLabManRM_2009.EXE and follow the prompts.



- If converting from an earlier version of LabMan select "Convert LabMan Data".
- Reports will be saved in \Reports folder.
- Documentation will be saved in \Documentation folder

This application requires some ExactRM files:

Make the following MAXUpdate files available from a search path:

DLL's
MAXTRAN2.DLL
MAXEXEC2.DLL

These files will be installed by the Client Setup routine in \Exact\RMClient\EFW. As MAX is updated it is important to also update the files that are used by this application.

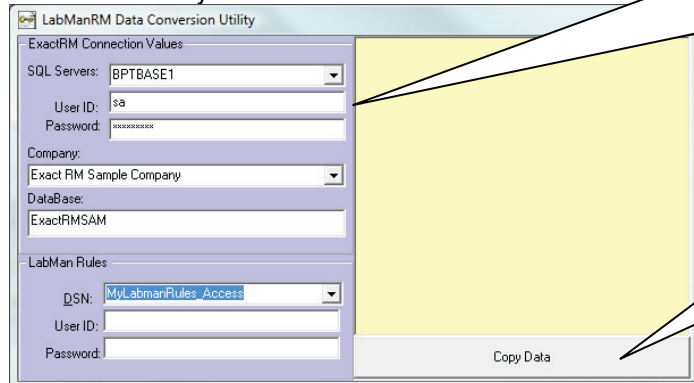
Data Conversion:

If you are converting from the MAX Pervasive version of LabMan this utility will move the LabMan data into the MAX company database. The following tables will be created and populated with the current LabMan data which resides in a standalone database for MAX 4 version of LabMan.

Consignment tables within ExactRM Company Database:

CUSTOM_BPT_LABMAN_BATCHPAYTRANS
CUSTOM_BPT_LABMAN_ORGANIZATION
CUSTOM_BPT_LABMAN_PAYTRANS
CUSTOM_BPT_LABMAN_RULES
CUSTOM_BPT_LABMAN_SECURITY
CUSTOM_BPT_LABMAN_SHIFTS
CUSTOM_BPT_LABMAN_SWITCHES

Conversion Utility:



1. Enter the server, user, password and Company for the new ExactRM database
2. Enter the DSN, user and password for current LabMan database

Click "Copy Data" to create the new tables and copy the data.

Installation: LabManRM

LabMan:

Login:

The screenshot shows a 'Login' dialog box with a title bar containing a red 'X' button. The dialog has two input fields: 'User Name' and 'Password'. Below these fields are three buttons: 'Data Sources', 'OK', and 'Cancel'. At the bottom of the dialog, there is a status bar with the text 'BPTBASE1 | ExactRMSAM | Exact RM Sample Company | GP DSN: MyTwo'.

The starting User = "MANAGER" and Password = "PASSWORD"

Data Settings:

The screenshot shows a 'Data Settings' dialog box with a title bar containing a red 'X' button. The dialog is divided into several sections: 'MAX Connection Values' with a dropdown for 'SQL Servers' and a checkbox for 'Use Windows Authentication'; 'SQL Server Authentication' with fields for 'User ID' and 'Password'; 'Company' with a dropdown for 'Company' and a text field for 'DataBase'; 'MAX License Path' with a text field; 'Dynamics GP Company Data Connection Values' with fields for 'DSN', 'UID', and 'Password'; and 'Dynamics GP System Data Connection Values' with fields for 'DSN', 'UID', and 'Password'. A 'Test MAX Connection' button is located below the 'MAX License Path' field. At the bottom, there is a 'Crystal Reports path' field.

1. Enter the server, user, password and Company for the new ExactMAX database.
2. Enter the MAX License path.
3. Enter Crystal Reports path (default is \Reports withing installed to folder.)
4. Dynamics Company DSN, user and password(Optional)
5. Dynamics System DSN, user and password (optional; required for Dynamics Payroll integration)